

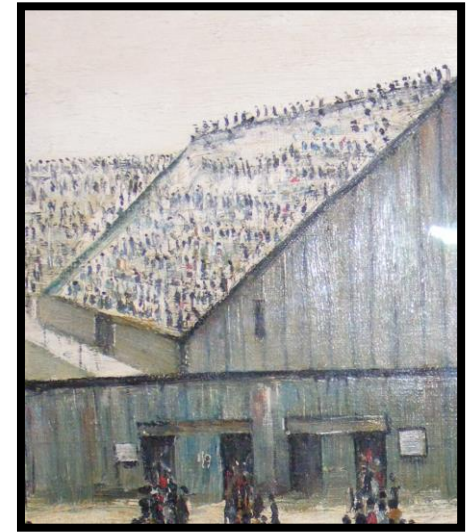
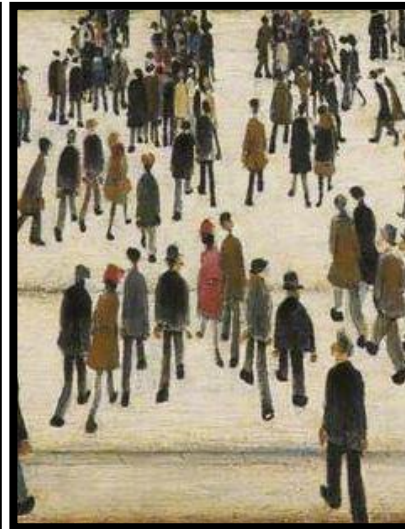
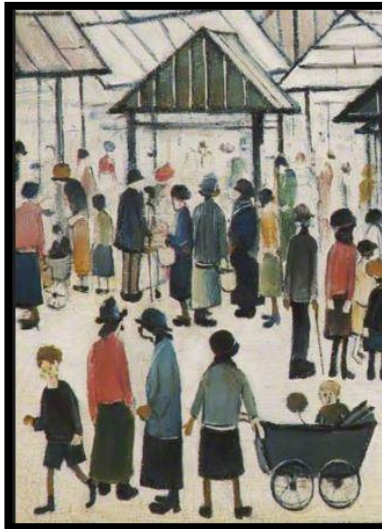
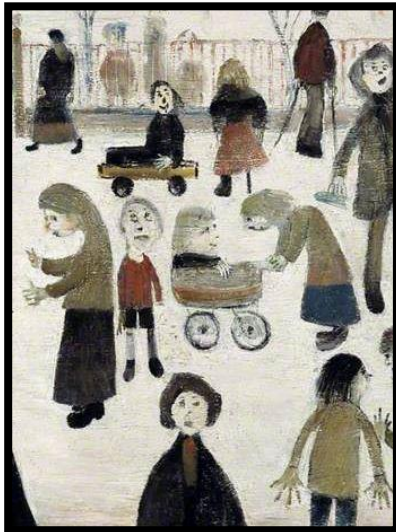
LKS2 Topic: Meet the Artists Block A: Painters Session 4

Painting the human form (Lowry style)

Look at these up close and far away Lowry figures - what do you notice about the size and detail on them?

Watch the video of Lowry painting his figures and see if you can recreate his technique.

<https://www.bbc.co.uk/bitesize/clips/zgcd2hv>



Lowry painted the social interactions and everyday activities that people engaged in mainly in his local area. You are now going to paint your own urban landscape that is local to you and you will be looking for social interactions – for example, you could paint playtime in our school’s playground!

First, you will create a sketch / an outline of the playground and surrounding buildings using a pencil.

Then you will create matchstick figures with a cross (body), circle (head) and two angled lines (legs).

Finally, use colours (preferably paints)- think carefully about how the figures are going to be dressed and the colours of the buildings. Enjoy!