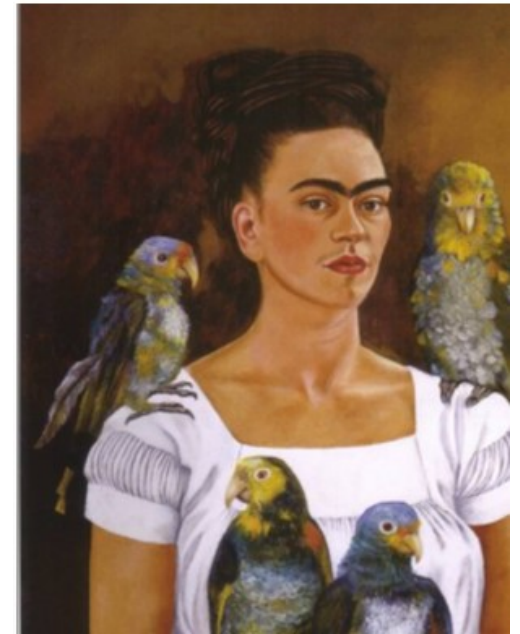
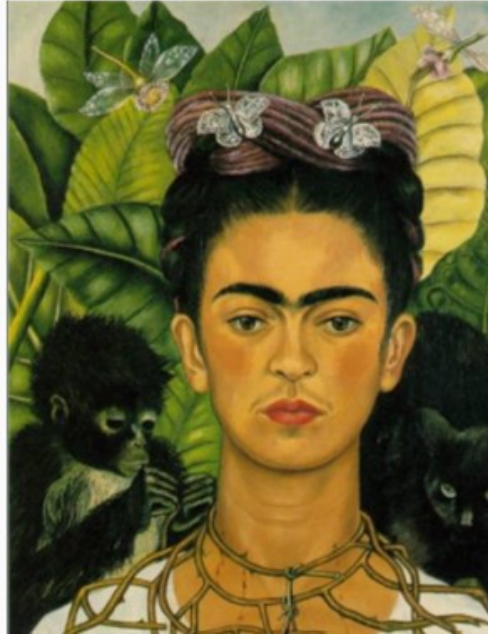


LKS2 Topic: Meet the Artists Block A: Painters Session 1



Guidance for sketching a portrait

Explain to children that they will be using charcoal to sketch their portrait before painting it during the next session. This is because paint covers over charcoal better than it does pencil. It would also have been Kahlo's drawing tool.

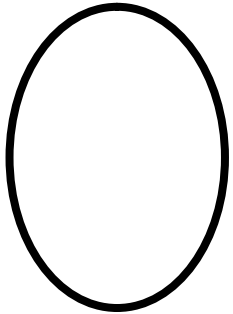
Children may have prior experience of sketching portraits, so you will need to establish if and how much guidance is required. For those with minimal experience of portraiture and face proportions the following steps should be covered.

Sketching your portrait (see pictorial guidance for reference)

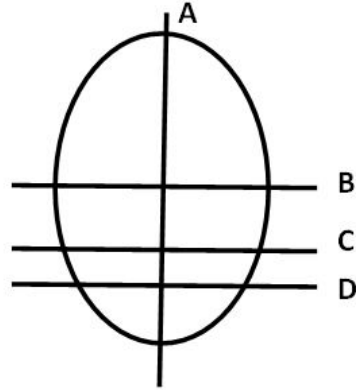
- 1.** Draw a head shape (generally rounder at the top and more tapered towards the chin). Use a gentle back and forth movement of the charcoal to draw the lines
- 2.** Draw in lines A and B faintly - they should be centred vertically as well as horizontally. Now draw in line C (about half way between line B and the bottom of the chin) and line D (about a third of the way down between line C and the bottom of the chin)
- 3.** Line B defines where the middle of the eyes will sit. Draw in 5 'eyes' across the face to help position the actual eyes correctly
- 4.** The 'middle' and 'outer' of your 5 eyes can be rubbed out once the proportions are correct. Draw in the round Iris in the middle of each remaining eye
- 5.** Line C defines the base of the nose. Draw the nostrils in here
- 6.** Line D defines the middle of the lips - draw the top lip above this line and the bottom lip below it
- 7.** Add in the ears - the top of the ears is in line with the top of the eyes
- 8.** Add in hair
- 9.** Once completed you can add in any background detail and symbolic items

Sketching a self-portrait: pictorial guidance

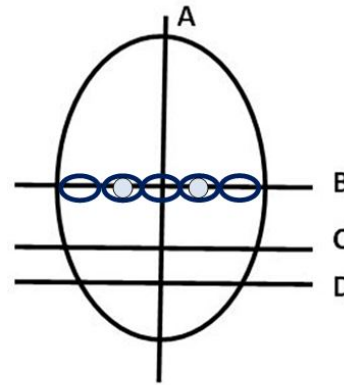
1



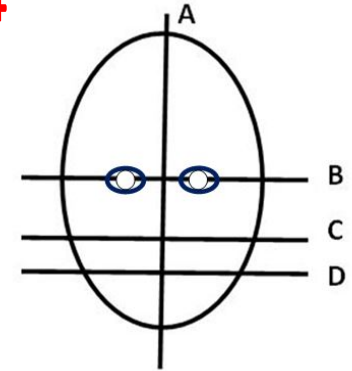
2



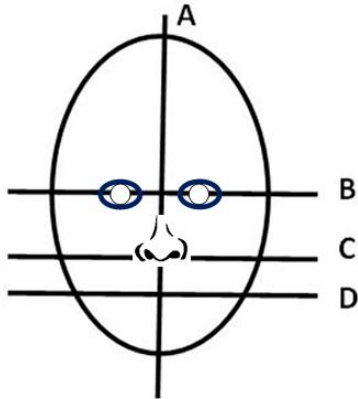
3



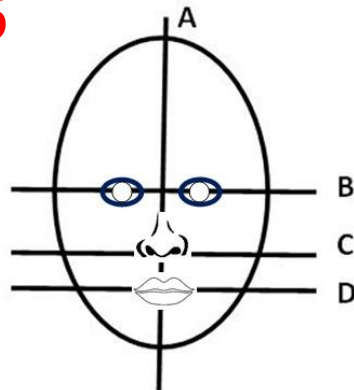
4



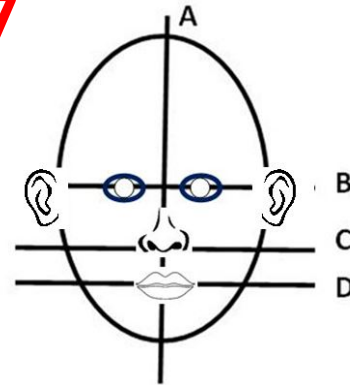
5



6



7



8

